



VIENNA SYMPHONIC LIBRARY

# Vienna Instruments

# Harps

Mapping Documentation

**Harp 1**

**Harp 2**



## Contents

<b>Introduction</b>	<b>4</b>
Patch information	4
Matrix information	4
Preset information	4
Abbreviations	5
The orchestra	5
Pitch	6
<b>28 Harp I</b>	<b>7</b>
Description	7
Range and notation	7
Sound characteristics	7
Combination with other instruments	7
<b>Patches</b>	<b>8</b>
01 SINGLE NOTES	8
02 GLISSANDI	8
01 Major slow speed	9
02 Major medium speed	9
03 Major fast speed	10
04 Minor slow speed	10
05 Minor medium speed	11
06 Minor fast speed	11
07 7V major	12
07 7V major slow speed	12
08 7V major medium speed	13
09 7V major fast speed	13
10 7V minor	14
10 7V minor slow speed	14
11 7V minor medium speed	15
12 7V minor fast speed	15
13 7 diminished	16
13 7 diminished slow speed	16
14 7 diminished medium speed	17
15 7 diminished fast speed	17
16 Pentatonic	18
16 Pentatonic slow speed	18
17 Pentatonic medium speed	19
18 Pentatonic fast speed	19
19 Whole	20
19 Whole slow speed	20
20 Whole medium speed	21
21 Whole fast speed	21

03 ARPEGGIOS a3 . . . . .	22
01 major a3 slow speed . . . . .	22
02 major a3 fast speed . . . . .	22
03 major a3 straight . . . . .	22
04 minor a3 slow speed . . . . .	22
05 minor a3 fast speed . . . . .	22
06 minor a3 straight . . . . .	23
07 dim a3 slow speed . . . . .	23
10 augm a3 slow speed . . . . .	23
04 ARPEGGIOS a4 . . . . .	23
01 major a4 slow speed . . . . .	23
02 major a4 fast speed . . . . .	23
03 major a4 straight . . . . .	24
04 minor a4 slow speed . . . . .	24
05 minor a4 fast speed . . . . .	24
06 minor a4 straight . . . . .	24
07 dim a4 slow speed . . . . .	24
10 augm a4 slow speed . . . . .	25
99 RELEASE . . . . .	25
<b>Matrices . . . . .</b>	<b>26</b>
Matrix - LEVEL 1 . . . . .	26
Matrix - LEVEL 2 A - Basic . . . . .	26
Matrix - LEVEL 2 B - Glissandi . . . . .	27
Matrix - LEVEL 2 C - Arpeggios . . . . .	32
<b>Presets . . . . .</b>	<b>35</b>
<b>29 Harp II . . . . .</b>	<b>36</b>
<b>Patches . . . . .</b>	<b>36</b>
01 BASIC ARTICULATIONS . . . . .	36
99 RELEASE . . . . .	37
<b>Matrices . . . . .</b>	<b>38</b>
Matrix - LEVEL 1 . . . . .	38
Matrix - LEVEL 2 . . . . .	38
<b>Presets . . . . .</b>	<b>38</b>
<b>Appendix . . . . .</b>	<b>39</b>
<b>Arpeggios - major . . . . .</b>	<b>39</b>
<b>Arpeggios - minor . . . . .</b>	<b>40</b>
<b>Harp 1 arpeggio ranges . . . . .</b>	<b>41</b>
Major 3-note . . . . .	41
Minor 3-note . . . . .	41
Major 4-note . . . . .	42
Minor 4-note . . . . .	43

## Introduction

This document contains the mapping list for the Harps Collection of Vienna Instruments. You will find in it a comprehensive survey of the articulations/patches for the Standard and the Extended Libraries of each instrument, a listing of abbreviations, and the mapping list proper which gives details for every Patch, Matrix, and Preset in the collection.

## Patch information

The Patch information includes articulation type, playing range, number of samples used, RAM requirements, the number of velocity layers and alternations, AB switching possibilities, etc., as well as Patch specific information if necessary.

Where the type of articulation requires a special mapping, the mapping layout will be shown in a detailed graphic.

The velocity layer switches generally are the same for patches with the same number of layers but may occasionally be adapted to the instrument's requirements:

Layers	Layer 1	Layer 2	Layer 3	Layer 4	Layer 5	Layer 6
2	1–88	89–127				
3	1–55	56–88	89–127			
4	1–55	56–88	89–108	109–127		
5	1–24	25–55	56–88	89–108	109–127	
6	1–24	25–55	56–88	89–108	109–118	119–127

## Matrix information

Each Matrix listing contains information regarding the Patches used for the Matrix, the number of horizontal and vertical dimensions, and switching properties. A mapping table shows the Cell positions for each of the Matrix' Patches.

**A/B switching** normally is set to A0 for upward/crescendo, and B0 for downward/diminuendo. However, some bass instruments go below that range so that the A/B keys have to be adapted accordingly. For example, the A/B switches for double bass are A0 and A#0 because the instrument's lower range extends to B0.

In order to facilitate working with **MIDI controller switches** like the Modulation wheel, the switching positions are not distributed equally across the controller range if they control more than two Matrix rows or columns; generally, the switching range will be narrower at the extreme positions because they are easy to set, and wider in the middle where it is harder to find the desired setting.

**Speed controller switches** naturally are adjusted to the Patches involved, and have been tested carefully as to their playability. However, if you find that they do not fit your playing, or want to try out other settings, you can change this as well as any other controller's settings at the **Control edit** page, and save the result in your Custom Matrix folder.

## Preset information

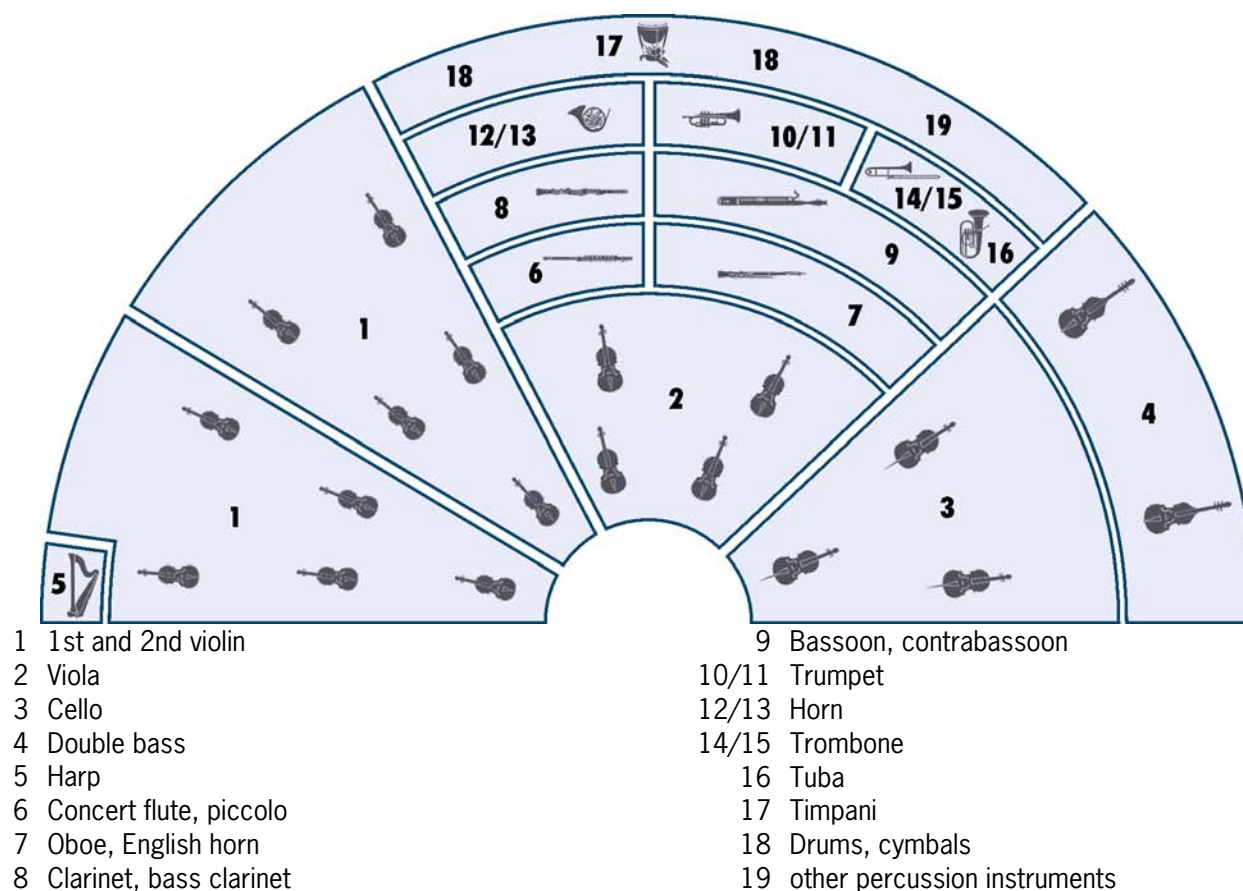
The Preset information lists the Matrices used in the Preset as well as its keyswitches. All other information can be gathered from the Matrix and Patch listings, so there's not really much to say here.

## Abbreviations

Abbreviation	Meaning	Abbreviation	Meaning
4gl, 5gl, 6gl, 7gl	harp glissando: number of tones to the octave	leg	legato
all	combination of all the instruments of a type	lo	long
arp	arpeggio	ma	major
aug	augmented	me	medium (speed)
damp	damped string	mi	harmonic (sharp) minor
dim	diminished	mute	damped after plucking (secco)
fa	fast	nail	finger nail
gliss	glissando	ped-gl	pedal glissando
HA	Harp 1	pent	pentatonic
HA2	Harp 2	sh	1 short
		sl	slow
		st	straight

## The orchestra

There are several ways of setting up an orchestra, depending on the era of the piece played, the type of the piece and the instruments it requires, and even on the preference of the conductor. The figure below shows one of the more common setups, which can be taken as a guideline for mixing a composition, properly positioning the instruments in the stereo field and adding reverb according to the size of the concert hall you want your piece to be played in.



## Pitch

For designating pitch, the Vienna Symphonic Library uses International Pitch Notation (IPN), which was agreed upon internationally under the auspices of the Acoustical Society of America. In this system the international standard of A=440 Hz is called A4 and middle C is C4. All pitches are written as capital letters, their respective octave being indicated by a number next to it. The lowest C on the piano is C1 (the A below that is A0), etc.

You can tune your Vienna Instruments to other players, or adjust it to tunings of earlier musical periods by setting the Perform page's Master Tune option within a range of 420 to 460 Hz.

# 28 Harp I

## Description

The harp, a stringed and plucked instrument, is one of the oldest and most widespread musical instruments known to man. In modern orchestral and concert playing the double-action pedal harp has established itself, a model with 7 pedals and 47 strings tuned diatonically in Cb major. (The tuning is not called B major for reasons of convenience. By depressing all the pedals to the first or second notch, the tuning can be raised to C natural and C sharp.)

## Range and notation

The harp has a range from Cb1–G#7.

As with the piano, harp notation is written on two staves and is non-transposing. The lower staff is in bass clef, the upper in treble clef. If required by the register both staves can be in the same clef, either bass or treble.

## Sound characteristics

Gentle, metallic, blurring, resonant, short, hard, drifting, full-sounding, rushing, clear, brilliant, glittering, flowing, dull, mellow, sharp, crystal clear, reverberating, splashing, cascading.

The full-sounding notes of the lower register resonate for a long time.

A brilliant and warm timbre is characteristic of the middle register. Notes resonate for one or two seconds. It is chiefly in this register that chords, harmony, arpeggios, glissandos and melody lines are played.

The high register has bright, hard and penetrating notes that die away very quickly.

## Combination with other instruments

The harp combines well with all orchestra groups.

It has the function of fleshing out the sound and is often treated as a filling-in instrument. The bottom strings are often used to play the bass voice. The weaving of delicate harmonic sound backdrops (arpeggio technique) is another of its quintessential tasks. In addition, it is the various types of harp glissando that lend the undulations of the orchestra the shimmer of brilliance which is one of the most fundamental sound experiences of them all.

The harp achieves a good blend with the strings because they are related to each other as stringed instruments. With the woodwind, chords in unison with the harp are one of the key combinations.

## Patches

### 01 SINGLE NOTES

Range: B0–A7



Single notes

**Level 1:** Normal, muted, harmonics, and bisbigliando

**Level 2:** Près-de-la-table, normal with muted release

#### 01 HA1\_normal

Samples: 246

RAM: 15 MB

Level 1

Single notes: Normal

3 velocity layers

2 Alternations

#### 02 HA1\_mute

Samples: 246

RAM: 15 MB

Level 1

Single notes: Muted

3 velocity layers

2 Alternations

#### 03 HA1\_pres-de-la-table

Samples: 162

RAM: 10 MB

Level 2

Single notes: Près-de-la-table

The strings are plucked near the resonating body of the harp, thus giving it a sharper, 'drier' sound.

2 velocity layers

2 Alternations

#### 04 HA1\_flageolette

Range: E3–A6

Samples: 38

RAM: 2 MB

Level 1

Single notes: Harmonics or flageolet tones

1 velocity layer

2 Alternations

#### 05 HA1\_bisbigliando

Range: A2–E7

Samples: 76

RAM: 4 MB

Level 1

Single notes: Bisbigliando or 'whispering', a sound effect created by soft tremolo play on the harp.

1 velocity layer

Release samples

#### 11 HA1\_normal+RS-mute

Samples: 480

RAM: 30 MB

Level 2

Single notes: Normal with muted release samples

3 velocity layers

Release samples

2 Alternations

AB switch: release volume high/low

### 02 GLISSANDI

Range: C3–E5

Glissandos

**Level 1:** Medium speed major, diminished, pentatonic, and whole tone

**Level 2:** All speeds, major, minor, diminished, pentatonic, and whole tone

The patches are mapped to white keys.



**02 GLISSANDI/01 Major slow speed****Range: C3–E5****01 HA1\_7gl-sl\_C-ma (through to B-ma)****Samples: 56****RAM: 3 MB****Level 2**

Slow scale glissandos, C to B major, up and down spanning 1, 3, and 5 octaves, single and multiple cross-glissandos  
2 velocity layers

AB switch: up/down

**Mapping:**

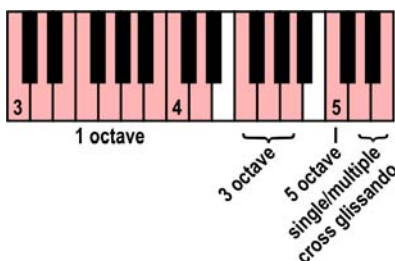
C3–D4: 1 octave glissandos, in various ranges (p and f for C and B, mf for other scales)

F4–A4: 3 octave (p/f)

C5: 5 octave (p/f)

D5: single cross-glissando (p/f)

E5: multiple cross-glissando (p/f)

**02 GLISSANDI/02 Major medium speed****Range: C3–E5****01 HA1\_7gl-me\_C-ma (through to B-ma)****Samples: 56****RAM: 3 MB****Level 1**

Medium scale glissandos, C to B major, up and down spanning 1, 3, and 5 octaves, single and multiple cross-glissandos  
2 velocity layers

AB switch: up/down

**Mapping:**

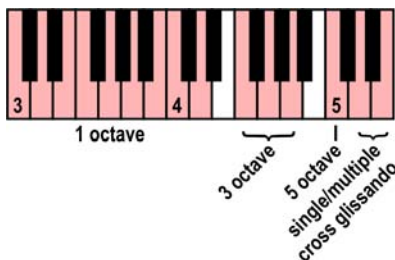
C3–D4: 1 octave glissandos, in various ranges (p and f for C and B, mf for other scales)

F4–A4: 3 octave (p/f)

C5: 5 octave (p/f)

D5: single cross-glissando (p/f)

E5: multiple cross-glissando (p/f)



**02 GLISSANDI/03 Major fast speed****Range: C3–D7****01 HA1\_7gl-fa\_C-ma (through to B-ma)****Samples: 74****RAM: 4 MB****Level 2**

Fast scale glissandos, C to B major, up and down spanning 1, 3, and 5 octaves, single and multiple cross-glissandos, and fortissimo octave glissandos

2 velocity layers

AB switch: up/down

**Mapping:**

C3–D4: 1 octave glissandos, in various ranges (p and f for C and B, mf for other scales)

F4–A4: 3 octave (p/f)

C5: 5 octave (p/f)

D5: single cross-glissando (p/f)

E5: multiple cross-glissando (p/f)

C6–D7: 1 octave glissandos, fortissimo, in various ranges

**02 GLISSANDI/04 Minor slow speed****Range: C3–E5****01 HA1\_7gl-sl\_C-mi (through to B-mi)****Samples: 56****RAM: 3 MB****Level 2**

Slow scale glissandos, C to B minor, up and down spanning 1, 3, and 5 octaves, single and multiple cross-glissandos

2 velocity layers

AB switch: up/down

**Mapping:**

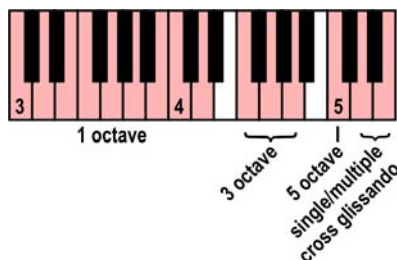
C3–D4: 1 octave glissandos, in various ranges (p and f for C and B, mf for other scales)

F4–A4: 3 octave (p/f)

C5: 5 octave (p/f)

D5: single cross-glissando (p/f)

E5: multiple cross-glissando (p/f)



**02 GLISSANDI/05 Minor medium speed****Range: C3–E5****01 HA1\_7gl-me\_C-mi (through to B-mi)****Samples: 56****RAM: 3 MB****Level 2**

Medium scale glissandos, C to B minor, up and down spanning 1, 3, and 5 octaves, single and multiple cross-glissandos

2 velocity layers

AB switch: up/down

**Mapping:**

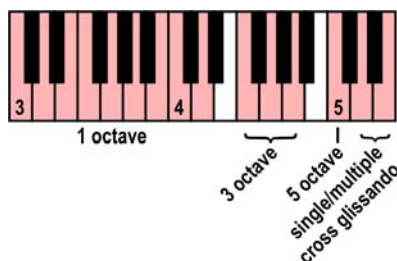
C3–D4: 1 octave glissandos, in various ranges (p and f for C and B, mf for other scales)

F4–A4: 3 octave (p/f)

C5: 5 octave (p/f)

D5: single cross-glissando (p/f)

E5: multiple cross-glissando (p/f)

**02 GLISSANDI/06 Minor fast speed****Range: C3–D7****01 HA1\_7gl-fa\_C-mi (through to B-mi)****Samples: 74****RAM: 4 MB****Level 2**

Fast scale glissandos, C to B minor, up and down spanning 1, 3, and 5 octaves, single and multiple cross-glissandos, and fortissimo octave glissandos

2 velocity layers

AB switch: up/down

**Mapping:**

C3–D4: 1 octave glissandos, in various ranges (p and f for C and B, mf for other scales)

F4–A4: 3 octave (p/f)

C5: 5 octave (p/f)

D5: single cross-glissando (p/f)

E5: multiple cross-glissando (p/f)

C6–D7: 1 octave glissandos, fortissimo, in various ranges



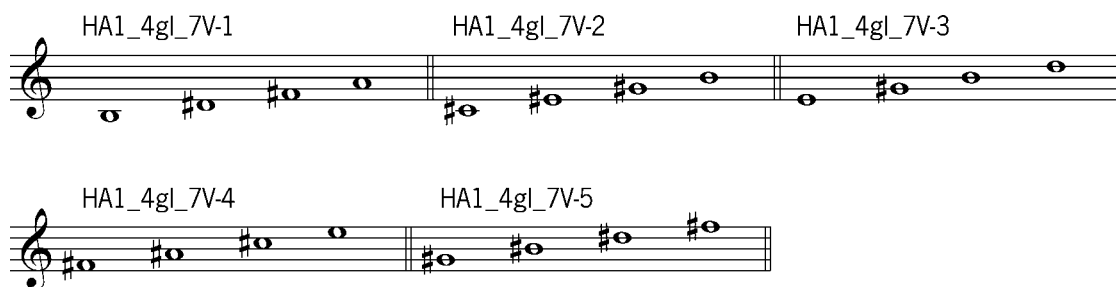
## 02 GLISSANDI/07 7V major

Glissandos

**Level 1:** Medium speed major, diminished, pentatonic, and whole tone

**Level 2:** All speeds, major, minor, diminished, pentatonic, and whole tone

The patches are mapped to white keys.



## 02 GLISSANDI/07 7V major slow speed Range: C3–E5

### 01 HA1\_4gl-sl\_7V-1 (2/3/4/5)

Samples: 38

RAM: 2 MB

**Level 2**

Slow 4-note glissandos, major, up and down spanning 1, 3, and 5 octaves, single and multiple cross-glissandos

2 velocity layers

AB switch: up/down

#### Mapping:

C3–D4: 1 octave glissandos, mezzoforte, in various ranges

F4–A4: 3 octave (p/f)

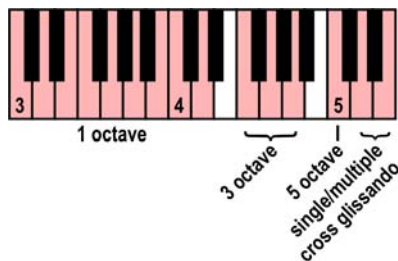
C5: 5 octave (p/f)

D5: single cross-glissando (p/f)

E5: multiple cross-glissando (p/f)

Scales: 1 – B, D#, F#, A; 2 – C#, E#, G#, B; 3 – E, G#, B, D;

4 – F#, A#, C#, E; 5 – G#, B#, D#, F#



**02 GLISSANDI/08 7V major medium speed Range: C3–E5**
**01 HA1\_4gl-me\_7V-1 (2/3/4/5)**
**Samples: 38**
**RAM: 2 MB**
**Level 2**

Medium 4-note glissandos, major, up and down spanning 1, 3, and 5 octaves, single and multiple cross-glissandos  
2 velocity layers

AB switch: up/down

**Mapping:**

C3–D4: 1 octave glissandos, mezzoforte, in various ranges

F4–A4: 3 octave (p/f)

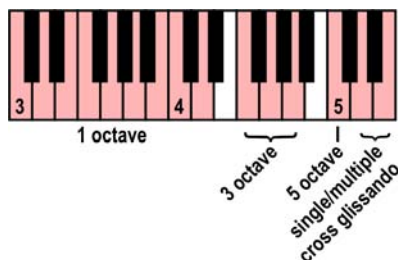
C5: 5 octave (p/f)

D5: single cross-glissando (p/f)

E5: multiple cross-glissando (p/f)

Scales: 1 – B, D#, F#, A; 2 – C#, E#, G#, B; 3 – E, G#, B, D;

4 – F#, A#, C#, E; 5 – G#, B#, D#, F#


**02 GLISSANDI/09 7V major fast speed**
**Range: C3–D7**
**01 HA1\_4gl-fa\_7V-1 (2/3/4/5)**
**Samples: 56**
**RAM: 3 MB**
**Level 2**

Fast 4-note glissandos, major, up and down spanning 1, 3, and 5 octaves, single and multiple cross-glissandos, and fortissimo octave glissandos

2 velocity layers

AB switch: up/down

**Mapping:**

C3–D4: 1 octave glissandos, mezzoforte, in various ranges

F4–A4: 3 octave (p/f)

C5: 5 octave (p/f)

D5: single cross-glissando (p/f)

E5: multiple cross-glissando (p/f)

C6–D7: 1 octave glissandos, fortissimo, in various ranges



**02 GLISSANDI/10 7V minor****Range: C3–E5**

Glissandos

**Level 1:** Medium speed major, diminished, pentatonic, and whole tone**Level 2:** All speeds, major, minor, diminished, pentatonic, and whole tone

The patches are mapped to white keys.

**02 GLISSANDI/10 7V minor slow speed****Range: C3–E5****01 HA1\_4gl-sl\_mi7-1 (2/3/4/5)****Samples: 38****RAM: 2 MB****Level 2**

Slow 4-note glissandos, minor, up and down spanning 1, 3, and 5 octaves, single and multiple cross-glissandos

2 velocity layers

AB switch: up/down

**Mapping:**

C3–D4: 1 octave glissandos, mezzoforte, in various ranges

F4–A4: 3 octave (p/f)

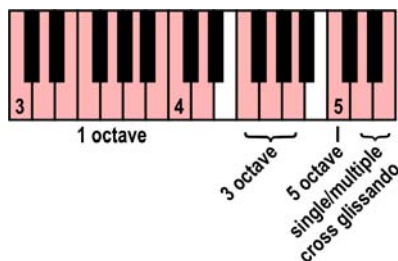
C5: 5 octave (p/f)

D5: single cross-glissando (p/f)

E5: multiple cross-glissando (p/f)

Scales: 1 – C, Eb, G, Bb; 2 – D, F, Ab, C; 3 – F, Ab, B (Cb), Eb;

4 – G, Bb, Db, F; 5 – Bb, Db, E (Fb), Ab



## 02 GLISSANDI/11 7V minor medium speed Range: C3–E5

### 01 HA1\_4gl-me\_mi7-1 (2/3/4/5)

Samples: 38

RAM: 2 MB

Level 2

Medium 4-note glissandos, minor, up and down spanning 1, 3, and 5 octaves, single and multiple cross-glissandos  
2 velocity layers

AB switch: up/down

#### Mapping:

C3–D4: 1 octave glissandos, mezzoforte, in various ranges

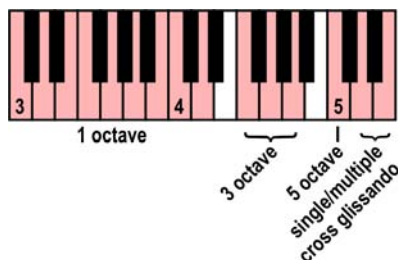
F4–A4: 3 octave (p/f)

C5: 5 octave (p/f)

D5: single cross-glissando (p/f)

E5: multiple cross-glissando (p/f)

Scales: 1 – C, Eb, G, Bb; 2 – D, F, Ab, C; 3 – F, Ab, B (Cb), Eb;  
4 – G, Bb, Db, F; 5 – Bb, Db, E (Fb), Ab



## 02 GLISSANDI/12 7V minor fast speed Range: C3–D7

### 01 HA1\_4gl-fa\_mi7-1 (2/3/4/5)

Samples: 56

RAM: 3 MB

Level 2

Fast 4-note glissandos, minor, up and down spanning 1, 3, and 5 octaves, single and multiple cross-glissandos, and fortissimo octave glissandos

2 velocity layers

AB switch: up/down

#### Mapping:

C3–D4: 1 octave glissandos, mezzoforte, in various ranges

F4–A4: 3 octave (p/f)

C5: 5 octave (p/f)

D5: single cross-glissando (p/f)

E5: multiple cross-glissando (p/f)

C6–D7: 1 octave glissandos, fortissimo, in various ranges

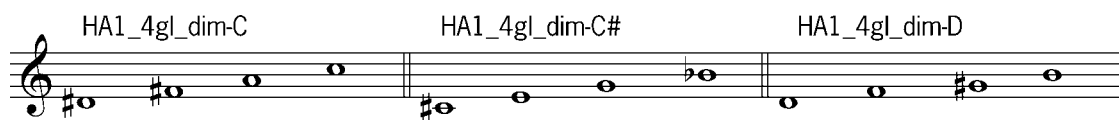


**02 GLISSANDI/13 7 diminished****Range: C3–E5**

Glissandos

**Level 1:** Medium speed major, diminished, pentatonic, and whole tone**Level 2:** All speeds, major, minor, diminished, pentatonic, and whole tone

The patches are mapped to white keys.

**02 GLISSANDI/13 7 diminished slow speed****Range: C3–E5****01 HA1\_4gl-sl\_dim-C (C#/D)****Samples: 38****RAM: 2 MB****Level 2**

Slow 4-note glissandos, diminished, up and down spanning 1, 3, and 5 octaves, single and multiple cross-glissandos

Base key: C/C#/D

2 velocity layers

AB switch: up/down

**Mapping:**

C3–D4: 1 octave glissandos, mezzoforte, in various ranges

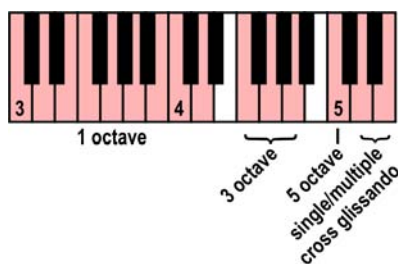
F4–A4: 3 octave (p/f)

C5: 5 octave (p/f)

D5: single cross-glissando (p/f)

E5: multiple cross-glissando (p/f)

Scales: C – D#, F#, A, C; C# – C#, E, G, Bb; D – D, F, G#, B





**02 GLISSANDI/14 7 diminished medium speed****Range: C3–E5****01 HA1\_4gl-me\_dim-C (C#/D)****Samples: 38****RAM: 2 MB****Level 1**

Medium 4-note glissandos, diminished, up and down spanning 1, 3, and 5 octaves, single and multiple cross-glissandos

Base key: C/C#/D

2 velocity layers

AB switch: up/down

**Mapping:**

C3–D4: 1 octave glissandos, mezzoforte, in various ranges

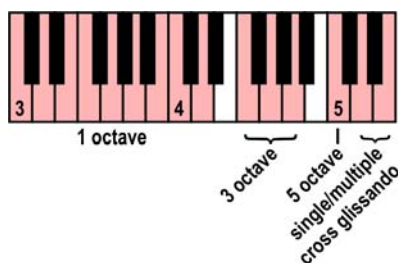
F4–A4: 3 octave (p/f)

C5: 5 octave (p/f)

D5: single cross-glissando (p/f)

E5: multiple cross-glissando (p/f)

Scales: C – D#, F#, A, C; C# – C#, E, G, Bb; D – D, F, G#, B

**02 GLISSANDI/15 7 diminished fast speed****Range: C3–D7****01 HA1\_4gl-fa\_dim-C (C#/D)****Samples: 56****RAM: 3 MB****Level 2**

Fast 4-note glissandos, diminished, up and down spanning 1, 3, and 5 octaves, single and multiple cross-glissandos, and fortissimo octave glissandos

Base key: C/C#/D

2 velocity layers

AB switch: up/down

**Mapping:**

C3–D4: 1 octave glissandos, mezzoforte, in various ranges

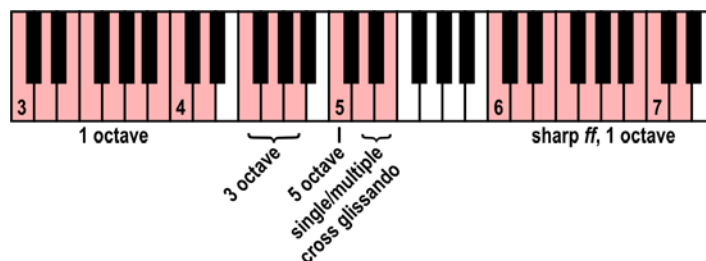
F4–A4: 3 octave (p/f)

C5: 5 octave (p/f)

D5: single cross-glissando (p/f)

E5: multiple cross-glissando (p/f)

C6–D7: 1 octave glissandos, fortissimo, in various ranges

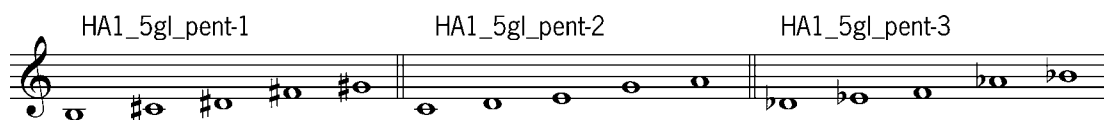


**02 GLISSANDI/16 Pentatonic****Range: C3–E5**

Glissandos

**Level 1:** Medium speed major, diminished, pentatonic, and whole tone**Level 2:** All speeds, major, minor, diminished, pentatonic, and whole tone

The patches are mapped to white keys.

**02 GLISSANDI/16 Pentatonic slow speed****Range: C3–E5****01 HA1\_5gl-sl\_pent-1 (2/3)****Samples: 38****RAM: 2 MB****Level 2**Slow 5-note glissandos, pentatonic, up and down spanning 1, 3, and 5 octaves, single and multiple cross-glissandos  
2 velocity layers

AB switch: up/down

**Mapping:**

C3–D4: 1 octave glissandos, mezzoforte, in various ranges

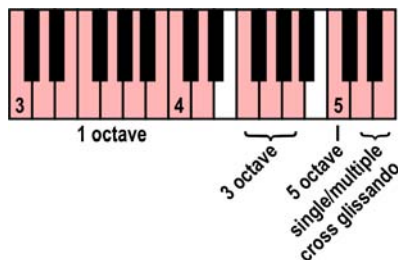
F4–A4: 3 octave (p/f)

C5: 5 octave (p/f)

D5: single cross-glissando (p/f)

E5: multiple cross-glissando (p/f)

Scales: 1 – B, C#, D#, F#, G#; 2 – C, D, E, G, A; 3 – Db, Eb, F, Ab, Bb



## 02 GLISSANDI/17 Pentatonic medium speed Range: C3–E5

### 01 HA1\_5gl-me\_pent-1 (2/3)

Samples: 38

RAM: 2 MB

Level 1

Medium 5-note glissandos, pentatonic, up and down spanning 1, 3, and 5 octaves, single and multiple cross-glissandos  
2 velocity layers

AB switch: up/down

#### Mapping:

C3–D4: 1 octave glissandos, mezzoforte, in various ranges

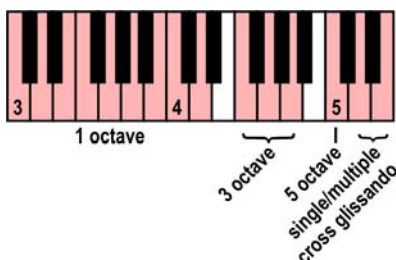
F4–A4: 3 octave (p/f)

C5: 5 octave (p/f)

D5: single cross-glissando (p/f)

E5: multiple cross-glissando (p/f)

Scales: 1 – B, C#, D#, F#, G#; 2 – C, D, E, G, A; 3 – Db, Eb, F, Ab, Bb



## 02 GLISSANDI/18 Pentatonic fast speed

Range: C3–D7

### 01 HA1\_5gl-fa\_pent-1 (2/3)

Samples: 56

RAM: 3 MB

Level 2

Fast 5-note glissandos, pentatonic, up and down spanning 1, 3, and 5 octaves, single and multiple cross-glissandos, and fortissimo octave glissandos

2 velocity layers

AB switch: up/down

#### Mapping:

C3–D4: 1 octave glissandos, mezzoforte, in various ranges

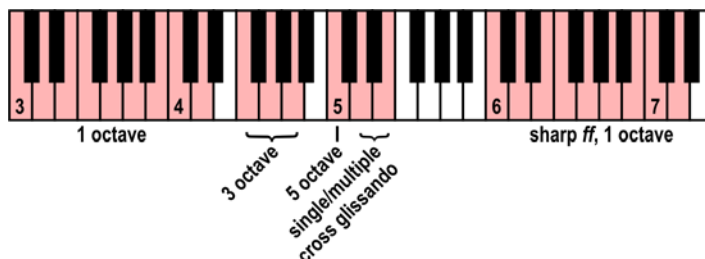
F4–A4: 3 octave (p/f)

C5: 5 octave (p/f)

D5: single cross-glissando (p/f)

E5: multiple cross-glissando (p/f)

C6–D7: 1 octave glissandos, fortissimo, in various ranges



**02 GLISSANDI/19 Whole****Range: C3–E5**

Glissandos

**Level 1:** Medium speed major, diminished, pentatonic, and whole tone**Level 2:** All speeds, major, minor, diminished, pentatonic, and whole tone

The patches are mapped to white keys.

**02 GLISSANDI/19 Whole slow speed****Range: C3–E5****01 HA1\_6gl-sl\_whole-C (C#)****Samples: 40****RAM: 2 MB****Level 2**

Slow 6-note glissandos, whole tone, up and down spanning 1, 3, and 5 octaves, single and multiple cross-glissandos

Base key: C/C#

2 velocity layers

AB switch: up/down

**Mapping:**

C3–E4: 1 octave glissandos, mezzoforte, in various ranges

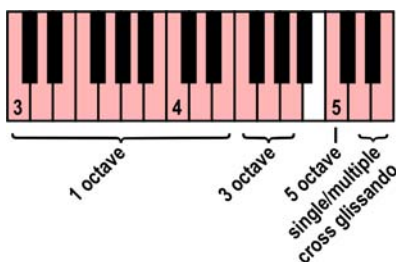
F4–A4: 3 octave (p/f)

C5: 5 octave (p/f)

D5: single cross-glissando (p/f)

E5: multiple cross-glissando (p/f)

Scales: C – C, D, E, F#, G#, A#; C# – C#, D#, F, G, A, B



**02 GLISSANDI/20 Whole medium speed****Range: C3–E5****01 HA1\_6gl-me\_whole-C (C#)****Samples: 40****RAM: 2 MB****Level 1**

Medium 6-note glissandos, whole tone, up and down spanning 1, 3, and 5 octaves, single and multiple cross-glissandos

Base key: C/C#

2 velocity layers

AB switch: up/down

**Mapping:**

C3–E4: 1 octave glissandos, mezzoforte, in various ranges

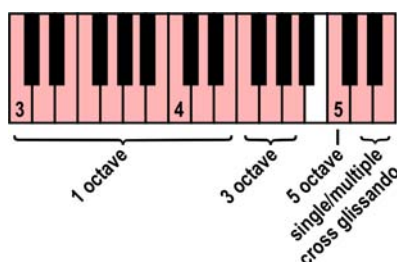
F4–A4: 3 octave (p/f)

C5: 5 octave (p/f)

D5: single cross-glissando (p/f)

E5: multiple cross-glissando (p/f)

Scales: C – C, D, E, F#, G#, A#; C# – C#, D#, F, G, A, B

**02 GLISSANDI/21 Whole fast speed****Range: C3–A7****01 HA1\_6gl-fa\_whole-C (C#)****Samples: 66****RAM: 4 MB****Level 2**

Fast 6-note glissandos, whole tone, up and down spanning 1, 3, and 5 octaves, single and multiple cross-glissandos, and fortissimo octave glissandos

Base key: C/C#

2 velocity layers

AB switch: up/down

**Mapping:**

C3–E4: 1 octave glissandos, mezzoforte, in various ranges

F4–A4: 3 octave (p/f)

C5: 5 octave (p/f)

D5: single cross-glissando (p/f)

E5: multiple cross-glissando (p/f)

C6–A7: 1 octave glissandos, fortissimo, in various ranges



**03 ARPEGGIOS a3**

3-note arpeggios

**Level 2:** Major and minor, diminished and augmented upward arpeggios, slow, fast, and straight (played as chords)

Major and minor arpeggios are mapped to the notes of their chords. For mapping illustrations and playing ranges of each Patch, please see the appendix.

**03 ARPEGGIOS a3/01 major a3 slow speed Range: C3–C7****01 HA1\_3arp-sl\_C-ma (through to B-ma)****Samples: 26****RAM: 1 MB****Level 2**

Slow 3-note upward arpeggios, C to B major

Mapping (for C major): C – base, E – 1st inversion, G – 2nd inversion

2 velocity layers

**03 ARPEGGIOS a3/02 major a3 fast speed Range: C3–C7****01 HA1\_3arp-fa\_C-ma (through to B-ma)****Samples: 26****RAM: 1 MB****Level 2**

Fast 3-note upward arpeggios, C to B major

Mapping (for C major): C – base, E – 1st inversion, G – 2nd inversion

2 velocity layers

**03 ARPEGGIOS a3/03 major a3 straight Range: C3–C7****01 HA1\_3arp-st\_C-ma (through to B-ma)****Samples: 26****RAM: 1 MB****Level 2**

Straight 3-note upward arpeggios (played as chords), C to B major

Mapping (for C major): C – base, E – 1st inversion, G – 2nd inversion

2 velocity layers

**03 ARPEGGIOS a3/04 minor a3 slow speed Range: C3–C7****01 HA1\_3arp-sl\_C-mi (through to B-mi)****Samples: 26****RAM: 1 MB****Level 2**

Slow 3-note upward arpeggios, C to B minor

Mapping (for C minor): C – base, D# – 1st inversion, G – 2nd inversion

2 velocity layers

**03 ARPEGGIOS a3/05 minor a3 fast speed Range: C3–C7****01 HA1\_3arp-fa\_C-mi (through to B-mi)****Samples: 26****RAM: 1 MB****Level 2**

Fast 3-note upward arpeggios, C to B minor

Mapping (for C minor): C – base, D# – 1st inversion, G – 2nd inversion

2 velocity layers

**03 ARPEGGIOS a3/06 minor a3 straight Range: C3–C7****01 HA1\_3arp-st\_C-mi (through to B-mi)****Samples: 26****RAM: 1 MB****Level 2**

Straight 3-note upward arpeggios (played as chords), C to B minor  
 Mapping (for C minor): C – base, D# – 1st inversion, G – 2nd inversion  
 2 velocity layers

**03 ARPEGGIOS a3/07 dim a3 slow speed Range: C3–D7****01 HA1\_3arp-sl\_dim (-fa/-st)****Samples: 102****RAM: 6 MB****Level 2**

Slow/fast/straight 3-note upward arpeggios, diminished  
 Mapped chromatically  
 2 velocity layers

**03 ARPEGGIOS a3/10 augm a3 slow speed Range: B2–C7****01 HA1\_3arp-sl\_aug (-fa/-st)****Samples: 50****RAM: 3 MB****Level 2**

Slow/fast/straight 3-note upward arpeggios, augmented  
 Mapped chromatically  
 2 velocity layers

**04 ARPEGGIOS a4**

4-note arpeggios

**Level 2:** Major and minor, diminished and augmented upward arpeggios, slow, fast, and straight (played as chords)  
 Major and minor arpeggios are mapped to the notes of their chords. For mapping illustrations and playing ranges of each Patch, please see the appendix.

**04 ARPEGGIOS a4/01 major a4 slow speed Range: C3–G6****01 HA1\_4arp-sl\_C-ma (through to B-ma)****Samples: 24****RAM: 1 MB****Level 2**

Slow 4-note upward arpeggios, C to B major  
 Mapping (for C major): C – base, E – 1st inversion, G – 2nd inversion  
 2 velocity layers

**04 ARPEGGIOS a4/02 major a4 fast speed Range: C3–G6****01 HA1\_4arp-fa\_C-ma (through to B-ma)****Samples: 24****RAM: 1 MB****Level 2**

Fast 4-note upward arpeggios, C to B major  
 Mapping (for C major): C – base, E – 1st inversion, G – 2nd inversion  
 2 velocity layers

**04 ARPEGGIOS a4/03 major a4 straight      Range: C3–G6****01 HA1\_4arp-st\_C-ma (through to B-ma)****Samples: 24****RAM: 1 MB****Level 2**

Straight 4-note upward arpeggios (played as chords), C to B major  
 Mapping (for C major): C – base, E – 1st inversion, G – 2nd inversion  
 2 velocity layers

**04 ARPEGGIOS a4/04 minor a4 slow speed      Range: C3–G6****01 HA1\_4arp-sl\_C-mi (through to B-mi)****Samples: 24****RAM: 1 MB****Level 2**

Slow 4-note upward arpeggios, C to B minor  
 Mapping (for C minor): C – base, D# – 1st inversion, G – 2nd inversion  
 2 velocity layers

**04 ARPEGGIOS a4/05 minor a4 fast speed      Range: C3–G6****01 HA1\_4arp-fa\_C-mi (through to B-mi)****Samples: 24****RAM: 1 MB****Level 2**

Fast 4-note upward arpeggios, C to B minor  
 Mapping (for C minor): C – base, D# – 1st inversion, G – 2nd inversion  
 2 velocity layers

**04 ARPEGGIOS a4/06 minor a4 straight      Range: C3–G6****01 HA1\_4arp-st\_C-mi (through to B-mi)****Samples: 24****RAM: 1 MB****Level 2**

Straight 4-note upward arpeggios (played as chords), C to B minor  
 Mapping (for C major): C – base, E – 1st inversion, G – 2nd inversion  
 2 velocity layers

**04 ARPEGGIOS a4/07 dim a4 slow speed      Range: C3–B6****01 HA1\_4arp-sl\_dim (-fa/-st)****Samples: 96****RAM: 6 MB****Level 2**

Slow/fast/straight 4-note upward arpeggios, diminished  
 Mapped chromatically  
 2 velocity layers



**04 ARPEGGIOS a4/10 augm a4 slow speed Range: B2–G#6****01 HA1\_4arp-sl\_aug (-fa/-st)****Samples: 46****RAM: 2 MB****Level 2**

Slow/fast/straight 4-note upward arpeggios, augmented  
Mapped chromatically  
2 velocity layers

**99 RELEASE**

This section contains release samples for various patches of the other sections. Please do not try to load them into a Vienna Instruments matrix – you will not be able to hear anything when you try to play them.

# Matrices

## Matrix - LEVEL 1

### L1 HA1 Articulation Combi

Samples: 606 RAM: 37 MB **Level 1**

Single notes  
Normal, muted, flageolet,  
bisbigliando

**Matrix switches:** Horizontal: Modwheel, 4 zones

	H1	H2	H3	H4
V1	normal	muted	flageolet	bisbigliando

### L1 HA1 Gliss Major-medium

Samples: 246 RAM: 15 MB **Level 1**

Glissandos, medium speed  
C to B major  
AB switch up/down

**Matrix switches:** Horizontal: Keyswitches, C1–B1

	C1	C#1	D1	D#1	E1	F1	F#1	G1	G#1	A1	A#1	B1
major gliss.	C	C#	D	D#	E	F	F#	G	G#	A	A#	B

### L1 HA1 Gliss Special-medium

Samples: 192 RAM: 12 MB **Level 1**

Glissandos, medium speed  
Diminished (C/C#/D), pentatonic (Var. 1/2/3), whole tone (C/C#)  
AB switch up/down

**Matrix switches:** Horizontal: Keyswitches, C1–D1 Vertical: Modwheel, 3 zones

	C1	C#1	D1
diminished	C	C#	D
pentatonic	var. 1	var. 2	var. 3
whole tone	C	C#	C#

## Matrix - LEVEL 2 A - Basic

### 00 HA1 Articulation Combi

Samples: 1002 RAM: 62 MB **Level 2**

Single notes  
Normal, muted, norm/mute RS  
flageolet, pres-de-la-table,  
bisbigliando

**Matrix switches:** Horizontal: Modwheel, 6 zones

	H1	H2	H3	H4	H5	H6
V1	normal	muted	norm/mute RS	flageolet	près-de-la-t.	bisbigliando

**Matrix - LEVEL 2 B - Glissandi****01 HA1 Gliss Major-slow****Samples: 246 RAM: 15 MB Level 2**

Glissandos, slow  
C to B major  
AB switch up/down

**Matrix switches:** Horizontal: Keyswitches, C1–B1

	C1	C#1	D1	D#1	E1	F1	F#1	G1	G#1	A1	A#1	B1
slow gliss.	C	C#	D	D#	E	F	F#	G	G#	A	A#	B

**02 HA1 Gliss Major-medium****Samples: 246 RAM: 15 MB Level 2**

Glissandos, medium speed  
C to B major  
AB switch up/down

**Matrix switches:** Horizontal: Keyswitches, C1–B1

	C1	C#1	D1	D#1	E1	F1	F#1	G1	G#1	A1	A#1	B1
medium gliss.	C	C#	D	D#	E	F	F#	G	G#	A	A#	B

**03 HA1 Gliss Major-fast****Samples: 354 RAM: 22 MB Level 2**

Glissandos, fast  
C to B major  
AB switch up/down

**Matrix switches:** Horizontal: Keyswitches, C1–B1

	C1	C#1	D1	D#1	E1	F1	F#1	G1	G#1	A1	A#1	B1
fast gliss.	C	C#	D	D#	E	F	F#	G	G#	A	A#	B

**04 HA1 Gliss Major-All****Samples: 846 RAM: 52 MB Level 2**

Glissandos  
Slow/medium/fast  
C to B major  
AB switch up/down

**Matrix switches:** Horizontal: Keyswitches, C1–B1 Vertical: Modwheel, 3 zones

	C1	C#1	D1	D#1	E1	F1	F#1	G1	G#1	A1	A#1	B1
slow gliss.	C	C#	D	D#	E	F	F#	G	G#	A	A#	B
medium gliss.	C	C#	D	D#	E	F	F#	G	G#	A	A#	B
fast gliss.	C	C#	D	D#	E	F	F#	G	G#	A	A#	B

**05 HA1 Gliss Minor-slow****Samples: 248 RAM: 15 MB Level 2**

Glissandos, slow  
C to B minor  
AB switch up/down

**Matrix switches:** Horizontal: Keyswitches, C1–B1

	C1	C#1	D1	D#1	E1	F1	F#1	G1	G#1	A1	A#1	B1
slow gliss.	C	C#	D	D#	E	F	F#	G	G#	A	A#	B

**06 HA1 Gliss Minor-medium****Samples: 248 RAM: 15 MB Level 2**

Glissandos, medium speed

C to B minor

AB switch up/down

**Matrix switches:** Horizontal: Keyswitches, C1–B1

	C1	C#1	D1	D#1	E1	F1	F#1	G1	G#1	A1	A#1	B1
medium gliss.	C	C#	D	D#	E	F	F#	G	G#	A	A#	B

**07 HA1 Gliss Minor-fast****Samples: 356 RAM: 22 MB Level 2**

Glissandos, fast

C to B minor

AB switch up/down

**Matrix switches:** Horizontal: Keyswitches, C1–B1

	C1	C#1	D1	D#1	E1	F1	F#1	G1	G#1	A1	A#1	B1
fast gliss.	C	C#	D	D#	E	F	F#	G	G#	A	A#	B

**08 HA1 Gliss Minor-All****Samples: 852 RAM: 53 MB Level 2**

Glissandos

Slow/medium/fast

C to B minor

AB switch up/down

**Matrix switches:** Horizontal: Keyswitches, C1–B1 Vertical: Modwheel, 3 zones

	C1	C#1	D1	D#1	E1	F1	F#1	G1	G#1	A1	A#1	B1
slow gliss.	C	C#	D	D#	E	F	F#	G	G#	A	A#	B
medium gliss.	C	C#	D	D#	E	F	F#	G	G#	A	A#	B
fast gliss.	C	C#	D	D#	E	F	F#	G	G#	A	A#	B

**09 HA1 Gliss 7V-Major-slow****Samples: 190 RAM: 11 MB Level 2**

4-note glissandos, var. 1-5

Major, slow

AB switch up/down

**Matrix switches:** Horizontal: Keyswitches, C1–E1

	C1	C#1	D1	D#1	E1
slow gliss.	var. 1	var. 2	var. 3	var. 4	var. 5

**10 HA1 Gliss 7V-Major-medium****Samples: 190 RAM: 11 MB Level 2**

4-note glissandos, var. 1-5

Major, medium

AB switch up/down

**Matrix switches:** Horizontal: Keyswitches, C1–E1

	C1	C#1	D1	D#1	E1
medium gliss.	var. 1	var. 2	var. 3	var. 4	var. 5

**11 HA1 Gliss 7V-Major-fast****Samples: 280 RAM: 17 MB Level 2**

4-note glissandos, var. 1-5

Major, fast

AB switch up/down

**Matrix switches:** Horizontal: Keyswitches, C1–E1

	C1	C#1	D1	D#1	E1
fast gliss.	var. 1	var. 2	var. 3	var. 4	var. 5

**12 HA1 Gliss 7V-Major-All****Samples: 660 RAM: 41 MB****Level 2**

4-note glissandos, var. 1-5

Major, slow/medium/fast

AB switch up/down

**Matrix switches:** Horizontal: Keyswitches, C1–E1 Vertical: Modwheel, 3 zones

	C1	C#1	D1	D#1	E1
slow gliss.	var. 1	var. 2	var. 3	var. 4	var. 5
medium gliss.	var. 1	var. 2	var. 3	var. 4	var. 5
fast gliss.	var. 1	var. 2	var. 3	var. 4	var. 5

**13 HA1 Gliss 7V-Minor-slow****Samples: 190 RAM: 11 MB****Level 2**

4-note glissandos, var. 1-5

Minor, slow

AB switch up/down

**Matrix switches:** Horizontal: Keyswitches, C1–E1

	C1	C#1	D1	D#1	E1
slow gliss.	var. 1	var. 2	var. 3	var. 4	var. 5

**14 HA1 Gliss 7V-Minor-medium****Samples: 190 RAM: 11 MB****Level 2**

4-note glissandos, var. 1-5

Minor, medium

AB switch up/down

**Matrix switches:** Horizontal: Keyswitches, C1–E1

	C1	C#1	D1	D#1	E1
medium gliss.	var. 1	var. 2	var. 3	var. 4	var. 5

**15 HA1 Gliss 7V-Minor-fast****Samples: 280 RAM: 17 MB****Level 2**

4-note glissandos, var. 1-5

Minor, fast

AB switch up/down

**Matrix switches:** Horizontal: Keyswitches, C1–E1

	C1	C#1	D1	D#1	E1
fast gliss.	var. 1	var. 2	var. 3	var. 4	var. 5

**16 HA1 Gliss 7V-Minor-All****Samples: 660 RAM: 41 MB****Level 2**

4-note glissandos, var. 1-5

Minor, slow/medium/fast

AB switch up/down

**Matrix switches:** Horizontal: Keyswitches, C1–E1 Vertical: Modwheel, 3 zones

	C1	C#1	D1	D#1	E1
slow gliss.	var. 1	var. 2	var. 3	var. 4	var. 5
medium gliss.	var. 1	var. 2	var. 3	var. 4	var. 5
fast gliss.	var. 1	var. 2	var. 3	var. 4	var. 5

**17 HA1 Gliss 7Diminished-slow****Samples: 114****RAM: 7 MB****Level 2**

4-note glissandos  
 Diminished (C/C#/D), slow  
 AB switch up/down

**Matrix switches:** Horizontal: Keyswitches, C1–D1

	C1	C#1	D1
slow gliss.	C	C#	D

**18 HA1 Gliss 7Diminished-medium****Samples: 114****RAM: 7 MB****Level 2**

4-note glissandos  
 Diminished (C/C#/D), medium  
 AB switch up/down

**Matrix switches:** Horizontal: Keyswitches, C1–D1

	C1	C#1	D1
medium gliss.	C	C#	D

**19 HA1 Gliss 7Diminished-fast****Samples: 168****RAM: 10 MB****Level 2**

4-note glissandos  
 Diminished (C/C#/D), fast  
 AB switch up/down

**Matrix switches:** Horizontal: Keyswitches, C1–D1

	C1	C#1	D1
fast gliss.	C	C#	D

**20 HA1 Gliss 7Diminished-All****Samples: 396****RAM: 24 MB****Level 2**

4-note glissandos  
 Diminished (C/C#/D)  
 Slow/medium/fast  
 AB switch up/down

**Matrix switches:** Horizontal: Keyswitches, C1–D1      Vertical: Modwheel, 3 zones

	C1	C#1	D1
slow gliss.	C	C#	D
medium gliss.	C	C#	D
fast gliss.	C	C#	D

**21 HA1 Gliss Pentatonic-slow****Samples: 38****RAM: 2 MB****Level 2**

5-note glissandos, var. 1-3  
 Pentatonic, slow  
 AB switch up/down

**Matrix switches:** Horizontal: Keyswitches, C1–D1

	C1	C#1	D1
slow gliss.	var. 1	var. 2	var. 3

**22 HA1 Gliss Pentatonic-medium****Samples: 38****RAM: 2 MB****Level 2**

5-note glissandos, var. 1-3  
 Pentatonic, medium  
 AB switch up/down

**Matrix switches:** Horizontal: Keyswitches, C1–D1

	C1	C#1	D1
medium gliss.	var. 1	var. 2	var. 3

**23 HA1 Gliss Pentatonic-fast****Samples: 56****RAM: 3 MB****Level 2**

5-note glissandos, var. 1-3

Pentatonic, fast

AB switch up/down

**Matrix switches:** Horizontal: Keyswitches, C1–D1

	C1	C#1	D1
fast gliss.	var. 1	var. 2	var. 3

**24 HA1 Gliss Pentatonic-All****Samples: 132****RAM: 8 MB****Level 2**

5-note glissandos, var. 1-3

Pentatonic

Slow/medium/fast

AB switch up/down

**Matrix switches:** Horizontal: Keyswitches, C1–D1 Vertical: Modwheel, 3 zones

	C1	C#1	D1
slow gliss.	var. 1	var. 2	var. 3
medium gliss.	var. 1	var. 2	var. 3
fast gliss.	var. 1	var. 2	var. 3

**25 HA1 Gliss Whole-slow****Samples: 40****RAM: 2 MB****Level 2**

6-note glissandos

Whole tone (C/C#), slow

AB switch up/down

**Matrix switches:** Horizontal: Keyswitches, C1–C#1

	C1	C#1
slow gliss.	C	C#

**26 HA1 Gliss Whole-medium****Samples: 40****RAM: 2 MB****Level 2**

6-note glissandos

Whole tone (C/C#), medium

AB switch up/down

**Matrix switches:** Horizontal: Keyswitches, C1–C#1

	C1	C#1
medium gliss.	C	C#

**27 HA1 Gliss Whole-fast****Samples: 66****RAM: 4 MB****Level 2**

6-note glissandos

Whole tone (C/C#), fast

AB switch up/down

**Matrix switches:** Horizontal: Keyswitches, C1–C#1

	C1	C#1
fast gliss.	C	C#

**28 HA1 Gliss Whole-All****Samples: 146 RAM: 9 MB****Level 2**

6-note glissandos  
 Whole tone (C/C#)  
 Slow/medium/fast  
 AB switch up/down

**Matrix switches:** Horizontal: Keyswitches, C1–C#1 Vertical: Modwheel, 3 zones

	C1	C#1
slow gliss.	C	C#
medium gliss.	C	C#
fast gliss.	C	C#

**Matrix - LEVEL 2 C - Arpeggios****31 HA1 Arp-3 Major-slow****Samples: 150 RAM: 9 MB****Level 2**

3-note arpeggios  
 Up, slow  
 C to B major

**Matrix switches:** Horizontal: Keyswitches, C1–B1

	C1	C#1	D1	D#1	E1	F1	F#1	G1	G#1	A1	A#1	B1
slow arp.	C	C#	D	D#	E	F	F#	G	G#	A	A#	B

**32 HA1 Arp-3 Major-fast****Samples: 150 RAM: 9 MB****Level 2**

3-note arpeggios  
 Up, fast  
 C to B major

**Matrix switches:** Horizontal: Keyswitches, C1–B1

	C1	C#1	D1	D#1	E1	F1	F#1	G1	G#1	A1	A#1	B1
fast arp.	C	C#	D	D#	E	F	F#	G	G#	A	A#	B

**33 HA1 Arp-3 Major-straight****Samples: 150 RAM: 9 MB****Level 2**

3-note arpeggios  
 Up, straight  
 C to B major

**Matrix switches:** Horizontal: Keyswitches, C1–B1

	C1	C#1	D1	D#1	E1	F1	F#1	G1	G#1	A1	A#1	B1
straight arp.	C	C#	D	D#	E	F	F#	G	G#	A	A#	B

**34 HA1 Arp-3 Major-All****Samples: 450 RAM: 28 MB****Level 2**

3-note arpeggios  
 Up, slow/medium/straight  
 C to B major

**Matrix switches:** Horizontal: Keyswitches, C1–B1 Vertical: Modwheel, 3 zones

	C1	C#1	D1	D#1	E1	F1	F#1	G1	G#1	A1	A#1	B1
slow arp.	C	C#	D	D#	E	F	F#	G	G#	A	A#	B
fast arp.	C	C#	D	D#	E	F	F#	G	G#	A	A#	B
straight arp.	C	C#	D	D#	E	F	F#	G	G#	A	A#	B



**35 HA1 Arp-3 Minor-slow****Samples: 152 RAM: 9 MB****Level 2**

3-note arpeggios

Up, slow

C to B minor

**Matrix switches:** Horizontal: Keyswitches, C1–B1

	C1	C#1	D1	D#1	E1	F1	F#1	G1	G#1	A1	A#1	B1
slow arp.	C	C#	D	D#	E	F	F#	G	G#	A	A#	B

**36 HA1 Arp-3 Minor-fast****Samples: 152 RAM: 9 MB****Level 2**

3-note arpeggios

Up, fast

C to B minor

**Matrix switches:** Horizontal: Keyswitches, C1–B1

	C1	C#1	D1	D#1	E1	F1	F#1	G1	G#1	A1	A#1	B1
fast arp.	C	C#	D	D#	E	F	F#	G	G#	A	A#	B

**37 HA1 Arp-3 Minor-straight****Samples: 152 RAM: 9 MB****Level 2**

3-note arpeggios

Up, straight

C to B minor

**Matrix switches:** Horizontal: Keyswitches, C1–B1

	C1	C#1	D1	D#1	E1	F1	F#1	G1	G#1	A1	A#1	B1
straight arp.	C	C#	D	D#	E	F	F#	G	G#	A	A#	B

**38 HA1 Arp-3 Minor-All****Samples: 456 RAM: 28 MB****Level 2**

3-note arpeggios

Up, slow/medium/straight

C to B minor

**Matrix switches:** Horizontal: Keyswitches, C1–B1 Vertical: Modwheel, 3 zones

	C1	C#1	D1	D#1	E1	F1	F#1	G1	G#1	A1	A#1	B1
slow arp.	C	C#	D	D#	E	F	F#	G	G#	A	A#	B
fast arp.	C	C#	D	D#	E	F	F#	G	G#	A	A#	B
straight arp.	C	C#	D	D#	E	F	F#	G	G#	A	A#	B

**39 HA1 Arp-3 Special-All****Samples: 456 RAM: 28 MB****Level 2**

3-note arpeggios

Up, slow/medium/straight

Diminished, augmented

**Matrix switches:** Horizontal: Keyswitches, C1–C#1 Vertical: Modwheel, 3 zones

	C1	C#1
slow arp.	diminished	augmented
fast arp.	%	%
straight arp.	%	%

**41 HA1 Arp-4 Major-slow****Samples: 138****RAM: 8 MB****Level 2**

4-note arpeggios

Up, slow

C to B major

**Matrix switches:** Horizontal: Keyswitches, C1–B1

	C1	C#1	D1	D#1	E1	F1	F#1	G1	G#1	A1	A#1	B1
slow arp.	C	C#	D	D#	E	F	F#	G	G#	A	A#	B

**42 HA1 Arp-4 Major-fast****Samples: 138****RAM: 8 MB****Level 2**

4-note arpeggios

Up, fast

C to B major

**Matrix switches:** Horizontal: Keyswitches, C1–B1

	C1	C#1	D1	D#1	E1	F1	F#1	G1	G#1	A1	A#1	B1
fast arp.	C	C#	D	D#	E	F	F#	G	G#	A	A#	B

**43 HA1 Arp-4 Major-straight****Samples: 138****RAM: 8 MB****Level 2**

4-note arpeggios

Up, straight

C to B major

**Matrix switches:** Horizontal: Keyswitches, C1–B1

	C1	C#1	D1	D#1	E1	F1	F#1	G1	G#1	A1	A#1	B1
straight arp.	C	C#	D	D#	E	F	F#	G	G#	A	A#	B

**44 HA1 Arp-4 Major-All****Samples: 414****RAM: 25 MB****Level 2**

4-note arpeggios

Up, slow/medium/straight

C to B major

**Matrix switches:** Horizontal: Keyswitches, C1–B1      Vertical: Modwheel, 3 zones

	C1	C#1	D1	D#1	E1	F1	F#1	G1	G#1	A1	A#1	B1
slow arp.	C	C#	D	D#	E	F	F#	G	G#	A	A#	B
fast arp.	C	C#	D	D#	E	F	F#	G	G#	A	A#	B
straight arp.	C	C#	D	D#	E	F	F#	G	G#	A	A#	B

**45 HA1 Arp-4 Minor-slow****Samples: 138****RAM: 8 MB****Level 2**

4-note arpeggios

Up, slow

C to B minor

**Matrix switches:** Horizontal: Keyswitches, C1–B1

	C1	C#1	D1	D#1	E1	F1	F#1	G1	G#1	A1	A#1	B1
slow arp.	C	C#	D	D#	E	F	F#	G	G#	A	A#	B

**46 HA1 Arp-4 Minor-fast****Samples: 138****RAM: 8 MB****Level 2**

4-note arpeggios

Up, fast

C to B minor

**Matrix switches:** Horizontal: Keyswitches, C1–B1

	C1	C#1	D1	D#1	E1	F1	F#1	G1	G#1	A1	A#1	B1
fast arp.	C	C#	D	D#	E	F	F#	G	G#	A	A#	B

**47 HA1 Arp-4 Minor-straight****Samples: 138 RAM: 8 MB****Level 2**

4-note arpeggios

Up, straight

C to B minor

**Matrix switches:** Horizontal: Keyswitches, C1–B1

	C1	C#1	D1	D#1	E1	F1	F#1	G1	G#1	A1	A#1	B1
straight arp.	C	C#	D	D#	E	F	F#	G	G#	A	A#	B

**48 HA1 Arp-4 Minor-All****Samples: 414 RAM: 25 MB****Level 2**

4-note arpeggios

Up, slow/medium/straight

C to B minor

**Matrix switches:** Horizontal: Keyswitches, C1–B1 Vertical: Modwheel, 3 zones

	C1	C#1	D1	D#1	E1	F1	F#1	G1	G#1	A1	A#1	B1
slow arp.	C	C#	D	D#	E	F	F#	G	G#	A	A#	B
fast arp.	C	C#	D	D#	E	F	F#	G	G#	A	A#	B
straight arp.	C	C#	D	D#	E	F	F#	G	G#	A	A#	B

**49 HA1 Arp-4 Special-All****Samples: 426 RAM: 26 MB****Level 2**

4-note arpeggios

Up, slow/medium/straight

Diminished, augmented

**Matrix switches:** Horizontal: Keyswitches, C1–C#1 Vertical: Modwheel, 3 zones

	C1	C#1
slow arp.	diminished	augmented
fast arp.	%	%
straight arp.	%	%

**Presets****HA1 VSL Preset Level 1****Samples: 1044 RAM: 65 MB****Level 1**

L1 HA1\_Articulation\_Combi

L1 HA1 Gliss Major-medium

L1 HA1 Gliss Special-medium

**Keyswitches:** A7, B7, C8**HA1 VSL Preset Level 2****Samples: 5948 RAM: 371 MB****Level 2**

01 HA1 Articulation Combi

Glissandos - all: Major, minor, 4-note major and minor, diminished, pentatonic, and whole tone

Arpeggios - all: major, minor, diminished and augmented

**Keyswitches:** C7–A#7

# 29 Harp II

## Patches

### 01 BASIC ARTICULATIONS



Harp II, single notes

**Level 1:** Normal, muted, harmonics, and bisbigliando

**Level 2:** Damped, près-de-la-table, fingernails, pedal glissando, and normal with release variations

<b>01 HA2_normal</b>	<b>Range: B0–A7</b>	<b>Samples: 480</b>	<b>RAM: 30 MB</b>	<b>Level 1</b>
Single notes: Normal 3 velocity layers 4 Alternations				
<b>02 HA2_mute</b>	<b>Range: B0–A7</b>	<b>Samples: 240</b>	<b>RAM: 15 MB</b>	<b>Level 1</b>
Single notes: Muted 3 velocity layers 2 Alternations				
<b>03 HA2_damp</b>	<b>Range: A#1–G6</b>	<b>Samples: 108</b>	<b>RAM: 6 MB</b>	<b>Level 2</b>
Single notes: Damped 2 velocity layers 2 Alternations				
<b>04 HA2_pres-de-la-table</b>	<b>Range: A1–A7</b>	<b>Samples: 138</b>	<b>RAM: 8 MB</b>	<b>Level 2</b>
Single notes: Près-de-la-table The strings are plucked near the resonating body of the harp, thus giving it a sharper, 'drier' sound. 2 velocity layers 2 Alternations				
<b>05 HA2_nail</b>	<b>Range: B0–A7</b>	<b>Samples: 160</b>	<b>RAM: 10 MB</b>	<b>Level 2</b>
Single notes: Played with the fingernails 2 velocity layers 2 Alternations				
<b>06 HA2_flageolette</b>	<b>Range: G3–C7</b>	<b>Samples: 74</b>	<b>RAM: 4 MB</b>	<b>Level 1</b>
Single notes: Harmonics or flageolet tones 2 velocity layers 2 Alternations				
<b>07 HA2_pedal-gliss</b>	<b>Range: C1–G#7</b>	<b>Samples: 75</b>	<b>RAM: 4 MB</b>	<b>Level 2</b>
Single notes: Pedal glissando 1 velocity layer 2 Alternations				

**08 HA2\_bisbigliando****Range: A1–G6****Samples: 172****RAM: 10 MB****Level 1**

Single notes: Bisbigliando or 'whispering', a sound effect created by soft tremolo play on the harp.

2 velocity layers

Release samples

**11 HA2\_normal+RS-mute****Range: B0–A7****Samples: 720****RAM: 45 MB****Level 2**

Single notes: Normal with muted release samples

3 velocity layers

Release samples

4 Alternations

AB switch: release volume high/low

**12 HA2\_normal+RS-ped-gl****Range: B0–A7****Samples: 555****RAM: 34 MB****Level 2**

Single notes: Normal with pedal glissando release samples

3 velocity layers

Release samples

4 Alternations

AB switch: release volume high/low

**99 RELEASE**

This section contains release samples for various patches of the other sections. Please do not try to load them into a Vienna Instruments matrix – you will not be able to hear anything when you try to play them.

## Matrices

### Matrix - LEVEL 1

#### L1 HA2 Articulation Combi

Samples: 966 RAM: 60 MB **Level 1**

Single notes: Normal, muted, flageolet, and bisbigliando

**Matrix switches:** Horizontal: Modwheel, 4 zones

	H1	H2	H3	H4
V1	normal	muted	flageolet	bisbigliando

### Matrix - LEVEL 2

#### 01 HA2 Articulation Combi 1

Samples: 1172 RAM: 73 MB **Level 2**

Single notes: Normal, muted, normal with muted release samples, près-de-la-table, and flageolet

**Matrix switches:** Horizontal: Modwheel, 5 zones

	H1	H2	H3	H4	H5
V1	normal	muted	norm/mute RS	près-de-la-t.	flageolet

#### 02 HA2 Articulation Combi 2

Samples: 1070 RAM: 66 MB **Level 2**

Single notes: Played with the fingernails, damped, pedal glissando, normal with pedal glissando release samples, bisbigliando

**Matrix switches:** Horizontal: Modwheel, 5 zones

	H1	H2	H3	H4	H5
V1	fingernails	damped	pedal gliss.	norm/pedal RS	bisbigliando

## Presets

#### HA2 VSL Preset Level 1

Samples: 966 RAM: 60 MB **Level 1**

L1 HA2 Articulation Combi

#### HA2 VSL Preset Level 2

Samples: 1762 RAM: 110 MB **Level 2**

2 HA2 Articulation Combi 1

02 HA2 Articulation Combi 2

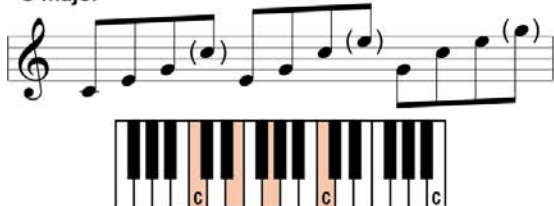
**Keyswitches:** B7, C8

## Appendix

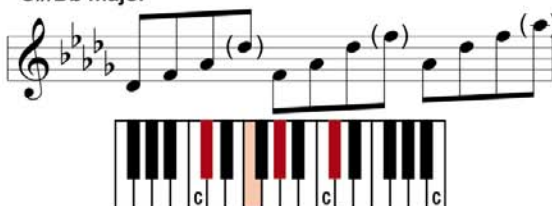
In the following, you will find notations and keyboard layout graphics for major and minor arpeggio, as well as a list of playing ranges for the individual Patches. Notes in brackets signify the fourth tone of 4-note arpeggios.

### Arpeggios - major

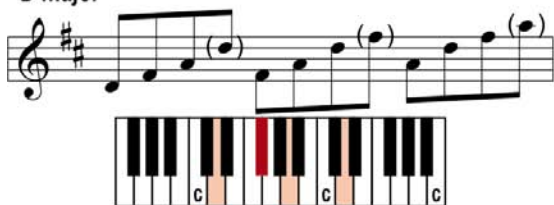
C major



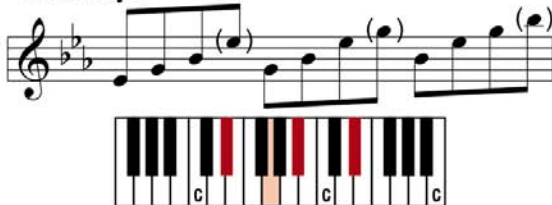
C#/Db major



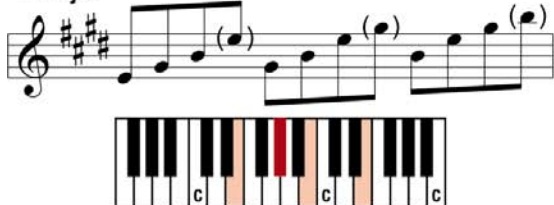
D major



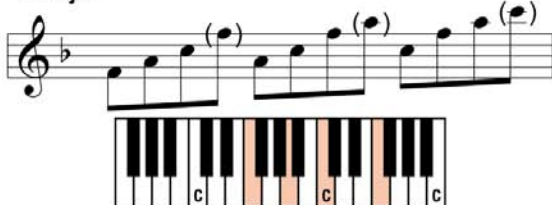
D#/Eb major



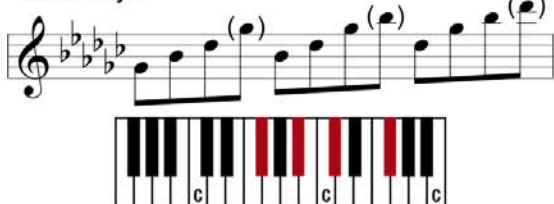
E major



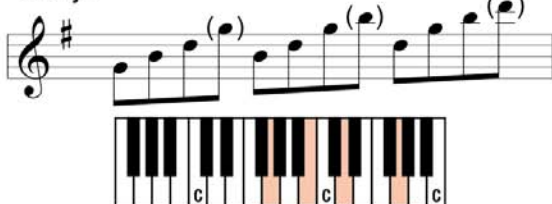
F major



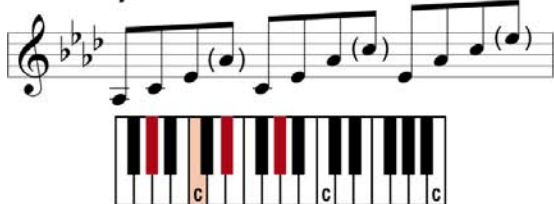
F#/Gb major



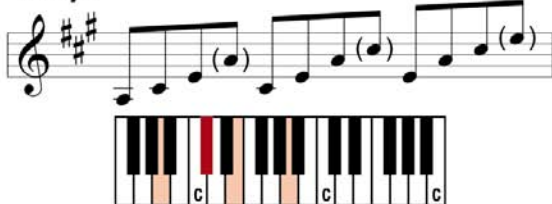
G major



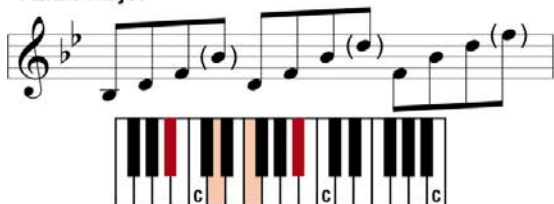
G#/Ab major



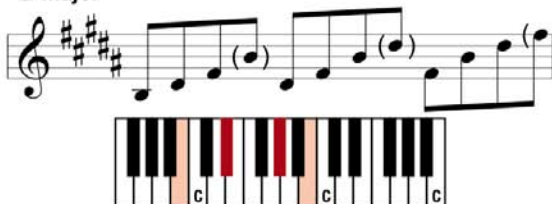
A major



A#/Bb major



B major



# Arpeggios - minor

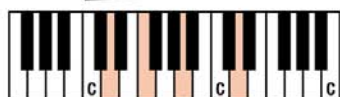
C minor



C#/Db minor



D minor



D#/Eb minor



E minor



F minor



F#/Gb minor



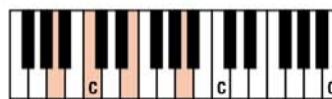
G minor



G#/Ab minor



A minor



A#/Bb minor



B minor





## Harp 1 arpeggio ranges

### Major 3-note

#### 01 major a3 slow speed play range

01 HA1_3arp-sl_C-ma	C3–C7
02 HA1_3arp-sl_C#-ma	C#3–G#6
03 HA1_3arp-sl_D-ma	D3–A6
04 HA1_3arp-sl_D#-ma	A#2–A#6
05 HA1_3arp-sl_E-ma	B2–B6
06 HA1_3arp-sl_F-ma	C3–A6
07 HA1_3arp-sl_F#-ma	C#3–A#6
08 HA1_3arp-sl_G-ma	B2–B6
09 HA1_3arp-sl_G#-ma	C3–C7
10 HA1_3arp-sl_A-ma	C#3–A6
11 HA1_3arp-sl_A#-ma	D3–A#6
12 HA1_3arp-sl_B-ma	B2–B6

#### 02 major a3 fast speed play range

01 HA1_3arp-fa_C-ma	C3–C7
02 HA1_3arp-fa_C#-ma	C#3–G#6
03 HA1_3arp-fa_D-ma	D3–A6
04 HA1_3arp-fa_D#-ma	A#2–A#6
05 HA1_3arp-fa_E-ma	B2–B6
06 HA1_3arp-fa_F-ma	C3–A6
07 HA1_3arp-fa_F#-ma	C#3–A#6
08 HA1_3arp-fa_G-ma	B2–B6
09 HA1_3arp-fa_G#-ma	C3–C7
10 HA1_3arp-fa_A-ma	C#3–A6
11 HA1_3arp-fa_A#-ma	D3–A#6
12 HA1_3arp-fa_B-ma	B2–B6

#### 03 major a3 straight play range

01 HA1_3arp-st_C-ma	C3–C7
02 HA1_3arp-st_C#-ma	C#3–G#6
03 HA1_3arp-st_D-ma	D3–A6
04 HA1_3arp-st_D#-ma	A#2–A#6
05 HA1_3arp-st_E-ma	B2–B6
06 HA1_3arp-st_F-ma	C3–A6
07 HA1_3arp-st_F#-ma	C#3–A#6
08 HA1_3arp-st_G-ma	B2–B6
09 HA1_3arp-st_G#-ma	C3–C7
10 HA1_3arp-st_A-ma	C#3–A6
11 HA1_3arp-st_A#-ma	D3–A#6
12 HA1_3arp-st_B-ma	B2–B6

### Minor 3-note

#### 04 minor a3 slow speed play range

01 HA1_3arp-sl_C-mi	C3–C7
02 HA1_3arp-sl_C#-mi	C#3–G#6
03 HA1_3arp-sl_D-mi	D3–A6
04 HA1_3arp-sl_D#-mi	A#2–A#6
05 HA1_3arp-sl_E-mi	B2–B6
06 HA1_3arp-sl_F-mi	C3–G#6
07 HA1_3arp-sl_F#-mi	C#3–A6
08 HA1_3arp-sl_G-mi	A#2–A#6
09 HA1_3arp-sl_G#-mi	B2–B6
10 HA1_3arp-sl_A-mi	A2–A6
11 HA1_3arp-sl_A#-mi	A#2–A#6
12 HA1_3arp-sl_B-mi	B2–B6

#### 05 minor a3 fast speed play range

01 HA1_3arp-fa_C-mi	C3–C7
02 HA1_3arp-fa_C#-mi	C#3–G#6
03 HA1_3arp-fa_D-mi	D3–A6
04 HA1_3arp-fa_D#-mi	A#2–A#6
05 HA1_3arp-fa_E-mi	B2–B6
06 HA1_3arp-fa_F-mi	C3–G#6
07 HA1_3arp-fa_F#-mi	C#3–A6
08 HA1_3arp-fa_G-mi	A#2–A#6
09 HA1_3arp-fa_G#-mi	B2–B6
10 HA1_3arp-fa_A-mi	A2–A6
11 HA1_3arp-fa_A#-mi	A#2–A#6
12 HA1_3arp-fa_B-mi	B2–B6

**06 minor a3 straight****play range**

01 HA1_3arp-st_C-mi	C3–C7
02 HA1_3arp-st_C#-mi	C#3–G#6
03 HA1_3arp-st_D-mi	D3–A6
04 HA1_3arp-st_D#-mi	A#2–A#6
05 HA1_3arp-st_E-mi	B2–B6
06 HA1_3arp-st_F-mi	C3–G#6
07 HA1_3arp-st_F#-mi	C#3–A6
08 HA1_3arp-st_G-mi	A#2–A#6
09 HA1_3arp-st_G#-mi	B2–B6
10 HA1_3arp-st_A-mi	A2–A6
11 HA1_3arp-st_A#-mi	A#2–A#6
12 HA1_3arp-st_B-mi	B2–B6

**Major 4-note****01 major a4 slow speed****play range**

01 HA1_4arp-sl_C-ma	C3–G6
02 HA1_4arp-sl_C#-ma	C#3–F6
03 HA1_4arp-sl_D-ma	D3–F#6
04 HA1_4arp-sl_D#-ma	A#2–G6
05 HA1_4arp-sl_E-ma	B2–G#6
06 HA1_4arp-sl_F-ma	C3–F6
07 HA1_4arp-sl_F#-ma	C#3–F#6
08 HA1_4arp-sl_G-ma	B2–G6
09 HA1_4arp-sl_G#-ma	C3–G#6
10 HA1_4arp-sl_A-ma	A3–C#7
11 HA1_4arp-sl_A#-ma	A#3–D7
12 HA1_4arp-sl_B-ma	B2–F#6

**02 major a4 fast speed****play range**

01 HA1_4arp-fa_C-ma	C3–G6
02 HA1_4arp-fa_C#-ma	C#3–F6
03 HA1_4arp-fa_D-ma	D3–F#6
04 HA1_4arp-fa_D#-ma	A#2–G6
05 HA1_4arp-fa_E-ma	B2–G#6
06 HA1_4arp-fa_F-ma	C3–F6
07 HA1_4arp-fa_F#-ma	C#3–F#6
08 HA1_4arp-fa_G-ma	B2–G6
09 HA1_4arp-fa_G#-ma	C3–G#6
10 HA1_4arp-fa_A-ma	A3–C#7
11 HA1_4arp-fa_A#-ma	A#3–D7
12 HA1_4arp-fa_B-ma	B2–F#6

**03 major a4 straight****play range**

01 HA1_4arp-st_C-ma	C3–G6
02 HA1_4arp-st_C#-ma	C#3–F6
03 HA1_4arp-st_D-ma	D3–F#6
04 HA1_4arp-st_D#-ma	A#2–G6
05 HA1_4arp-st_E-ma	B2–G#6
06 HA1_4arp-st_F-ma	C3–F6
07 HA1_4arp-st_F#-ma	C#3–F#6
08 HA1_4arp-st_G-ma	B2–G6
09 HA1_4arp-st_G#-ma	C3–G#6
10 HA1_4arp-st_A-ma	A3–C#7
11 HA1_4arp-st_A#-ma	A#3–D7
12 HA1_4arp-st_B-ma	B2–F#6

## Minor 4-note

### 04 minor a4 slow speed play range

01 HA1_4arp-sl_C-mi	C3–G6
02 HA1_4arp-sl_C#-mi	C#3–E6
03 HA1_4arp-sl_D-mi	D3–F6
04 HA1_4arp-sl_D#-mi	A#2–F#6
05 HA1_4arp-sl_E-mi	B2–G6
06 HA1_4arp-sl_F-mi	C3–F6
07 HA1_4arp-sl_F#-mi	C#3–F#6
08 HA1_4arp-sl_G-mi	A#2–G6
09 HA1_4arp-sl_G#-mi	B2–G#6
10 HA1_4arp-sl_A-mi	C3–E6
11 HA1_4arp-sl_A#-mi	C#3–F6
12 HA1_4arp-sl_B-mi	B2–F#6

### 05 minor a4 fast speed play range

01 HA1_4arp-fa_C-mi	C3–G6
02 HA1_4arp-fa_C#-mi	C#3–E6
03 HA1_4arp-fa_D-mi	D3–F6
04 HA1_4arp-fa_D#-mi	A#2–F#6
05 HA1_4arp-fa_E-mi	B2–G6
06 HA1_4arp-fa_F-mi	C3–F6
07 HA1_4arp-fa_F#-mi	C#3–F#6
08 HA1_4arp-fa_G-mi	A#2–G6
09 HA1_4arp-fa_G#-mi	B2–G#6
10 HA1_4arp-fa_A-mi	C3–E6
11 HA1_4arp-fa_A#-mi	C#3–F6
12 HA1_4arp-fa_B-mi	B2–F#6

### 06 minor a4 straight play range

01 HA1_4arp-st_C-mi	C3–G6
02 HA1_4arp-st_C#-mi	C#3–E6
03 HA1_4arp-st_D-mi	D3–F6
04 HA1_4arp-st_D#-mi	A#2–F#6
05 HA1_4arp-st_E-mi	B2–G6
06 HA1_4arp-st_F-mi	C3–F6
07 HA1_4arp-st_F#-mi	C#3–F#6
08 HA1_4arp-st_G-mi	A#2–G6
09 HA1_4arp-st_G#-mi	B2–G#6
10 HA1_4arp-st_A-mi	C3–E6
11 HA1_4arp-st_A#-mi	C#3–F6
12 HA1_4arp-st_B-mi	B2–F#6